



Дарлинг

User Manual

Daphne features a large number of calligraphic swashes that can be added to individual characters. OpenType features provide advanced typographic performance and can be accessed by almost all professional layout software. The features can be accessed via the OpenType palette (Illustrator) or the Character palette (InDesign and QuarkXpress). All glyphs available with the font can be seen in the Glyph palette.

Swash

Swash letters are available for certain characters.

Stylistic Alternates and Stylistic Sets (01 and 02)

Alternate glyphs are available using this feature.

Ligatures and Contextual Ligatures

Besides standard ligatures, the character pairs ch und ck are also available.

Contextual Alternates

A large number of swashes are available to add to certain characters. Type either a sequence of **asterisks** before a character or a sequence of **plus** signs after a character. The Swash, Stylistic Alternates, Stylistic Sets, Contextual Ligatures and Historical Forms features can also be applied by typing a # before the character. Swashes are also available for many accented and other language-specific characters. **Do not increase or decrease the spacing between the characters as it will lead to incorrect connections of swash and base glyph.**

Historical Forms

The lowercase s can be changed to its historical form.

Different Numerals and Fractions

Daphne contains Lining and Oldstyle figures (both proportional and tabular), superior and inferior figures, and fractions.

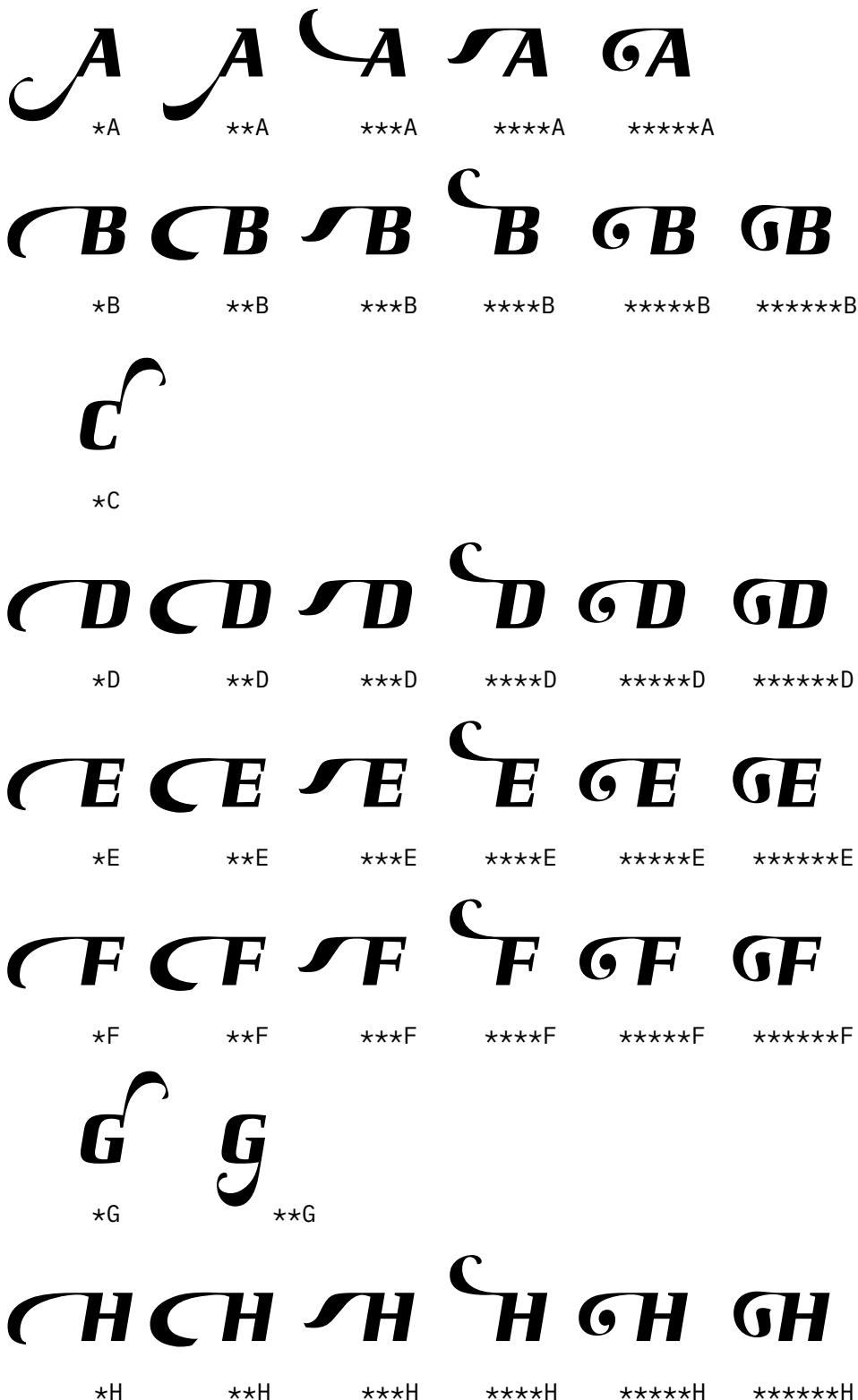
Input chart for accessing swash letters and alternate glyphs using the Contextual Alternates feature:

```
*****A   *****B   *C   *****D   *****E   *****F   **G   *****H
*****I   *****J   *****K   *****L   *****M *****N   *O   *****P
**Q   *****R   ****S++   *T   *****U   *****V   *****W   *****X
*****Y   *Z   a+++++   *****b   *c   c***h   c***k   *****d+++++
e+   ***f+   ***fi   ***fl   ***g   *****h   ***i   *****j
*****k   ***l   ***m+++++   ***n+++++   o+   *****p   ***q
***r   *s+   t+   ***u+++++   ***v   ***w   ***x   *****y   *z
*****ß
#F   #L   #T   #Z   #a+++++   #d   #fd   #e   #f   #fi   #fl   #g
##g+   ##g+   #k   ****#l   ##l   #r   #t   ***#y   #z   ***##ß
**#s++   ##s
```

Daphne User Manual

Contextual Alternates

A large number of swashes are available to add to certain characters. Type either a sequence of **asterisks** before a character or a sequence of **plus** signs after a character. Swashes are also available for many accented and other language-specific characters. **Do not increase or decrease the spacing between the characters as it will lead to incorrect connections of swash and base glyph.**



Daphne User Manual

I I I I I I

*I **I ***I ****I *****I ****I

J J J J J J

*J **J ***J ****J *****J ****I

K K K K K K K K K

*K **K ***K ****K *****K ****I

*****K *****K *****K

L L L L L L

*L **L ***L ****L *****L ****I

M M M M M

*M **M ***M ****M *****M ****I

N N N N N N N

*N **N ***N ****N *****N ****I

*****N

O

*O

P P P P P P

*P **P ***P ****P *****P ****I

Q Q

*Q **Q

Daphne User Manual

R R R R R R R R R
*R **R ***R ****R *****R *****R *****R *****R *****R *****R

S S S CS S S
*S **S ***S ****S S+ S++

T
*T

U U U U U U U
*U **U ***U ****U *****U *****U

V V V CV V
*V **V ***V ****V *****V

W W W CW W
*W **W ***W ****W *****W

X X X X X X
*X **X ***X ****X *****X *****X

Y Y Y CY Y Y
*Y **Y ***Y ****Y *****Y *****Y

Z
*Z

Daphne User Manual

a a+ a++ a+++ a++++ a+++++

a+ a++ a+++ a++++ a+++++

b b+ b++ b+++ b++++ b+++++ b++++++ b+++++++ b+++++++

*b **b ***b ****b *****b ****b+ ****b++ ****b+++ ****b++++ ****b+++++

c c+ c++ c+++ c++++ c+++++ c++++++ c+++++++ c+++++++

*c ch c+h c+h+ c+h++ c+h+++ ck c+k c+k+ c+k++ c+k+++

d d+ d++ d+++ d++++ d+++++ d++++++ d+++++++ d+++++++

*d **d ***d ****d *****d ****d+ ****d++ ****d+++ ****d++++ ****d+++++

e

e+

f f+ f++ f+++ f++++ f+++++ f++++++ f+++++++ f+++++++

*f **f ***f f+ *fi **fi ***fi *fl **fl ***fl

g g+ g++ g+++ g++++

*g **g ***g ****g

h h+ h++ h+++ h++++ h+++++ h++++++ h+++++++ h+++++++

*h **h ***h ****h *****h ****h+ ****h++ ****h+++ ****h++++ ****h+++++

i i+ i++ i+++

*i **i ***i

Daphne User Manual

j j j j j j j j

*j **j ***j ****j *****j *****j *****j *****j

k k k k k k k k k k k k

*k **k ***k ****k *****k *****k *****k *****k *****k *****k *****k *****k

l l l

*l **l ***l

m m m m m m m m m

*m **m ***m m+ m++ m+++ m++++ m+++++

n n n n n n n n n

*n **n ***n n+ n++ n+++ n++++ n+++++

o

o+

p p p p p p p p

*p **p ***p ****p *****p *****p *****p *****p

q q q

*q **q ***q

r r r

*r **r ***r

Daphne User Manual



 
*s s+


t+

       
*u **u ***u u+ u++ u+++ u++++ u+++++

  
*v **v ***v

  
*w **w ***w

  
*x **x ***x

     
*y **y ***y ****y *****y


*z

        
*ß **ß ***ß ****ß *****ß

Daphne User Manual

The OpenType features **Swash**, **Stylistic Alternates**, **Stylistic Sets**, **Contextual Ligatures** and **Historical Forms** can also be applied by typing a # before the character.

F L T Z

#F #L #T #Z

a a a as a a

#a #a+ #a++ #a+++ #a++++ #a+++++

d d e f fi fl

#d ##d #e #f #fi #fl

g g g g

#g ##g ###g+ ####g+

k | l l l l l l r r t

#k #l *#l **#l ***#l ****#l ##l #r #t

y y y y z | j j j r r

#y *#y **#y ***#y #z #s *#s **#s #s+ #s++ ##s

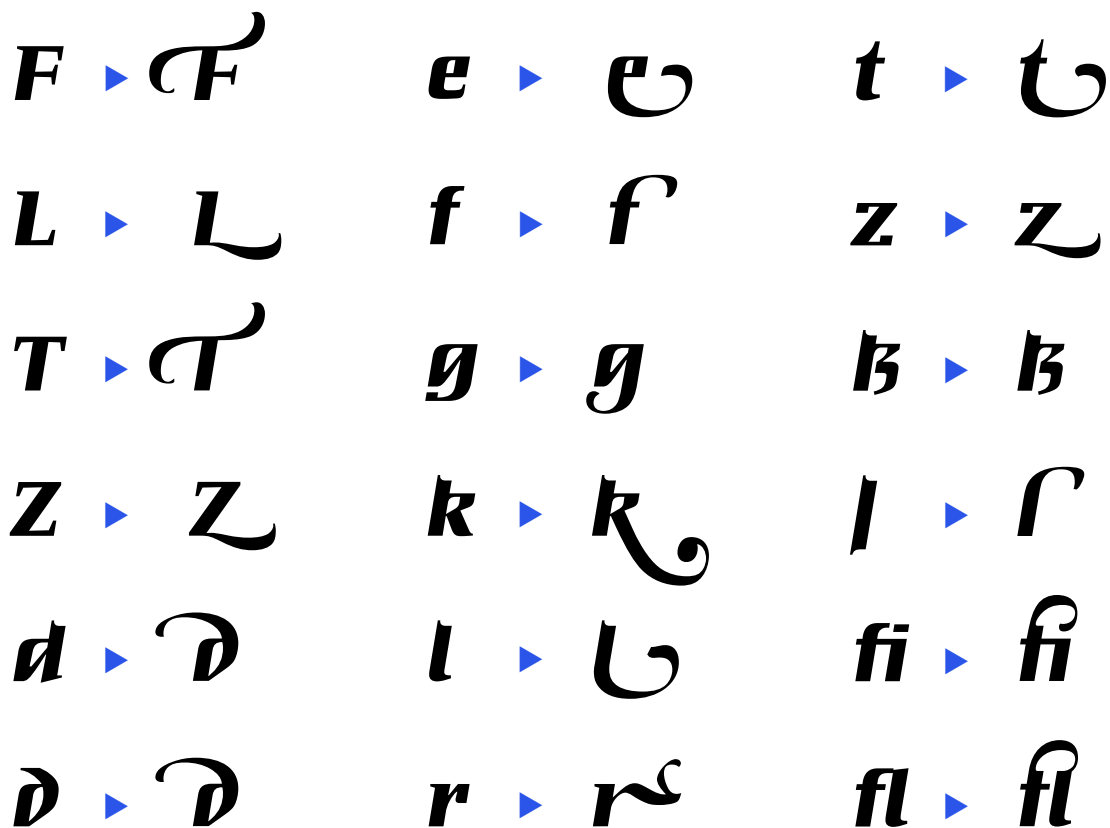
h h h h h h h h

#h *#h **#h ***#h ##h *##h **##h ***##h

Daphne User Manual

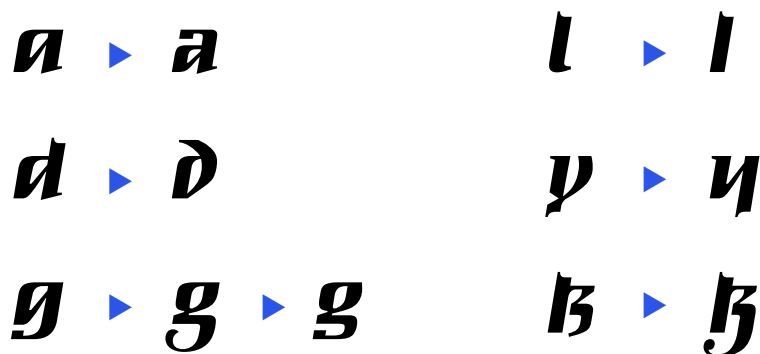
Swash

Swash letters are available for certain characters.



Stylistic Alternates and Stylistic Sets

Alternate glyphs are available using Stylistic Alternates (QuarkXpress, Illustrator, Photoshop) or Stylistic Set 01 and Stylistic Set 02 (InDesign).



Daphne User Manual

Ligatures and Contextual Ligatures

Besides standard ligatures, the character pairs ch und ck are also available.

fi ▶ **fi** **ch** ▶ **ch**
fl ▶ **fl** **ck** ▶ **ck**

Historical Forms

The lowercase s can be changed to its historical form. You can also add swashes to the long s using the Swash feature or Contextual Alternates.

s ▶ **|**

Different Numerals and Fractions

Daphen contains Lining and Oldstyle figures (both proportional and tabular), superior and inferior figures, and fractions.

0123456789

0123456789

0123456789

0123456789

H0123456789

H0123456789

0123456789/**0123456789**